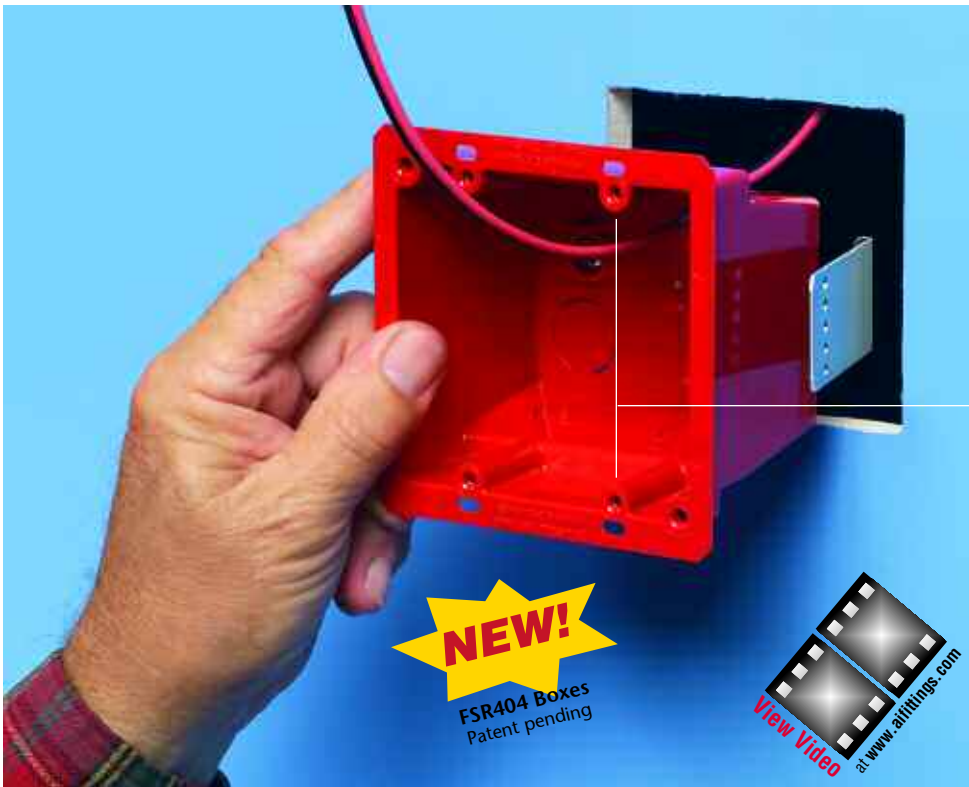


NEW!
more on
reverse

Non-Metallic and Plated Steel 4x4 Boxes

For Retrofit • Screw Hole Patterns for 4x4 and 2-gang Devices



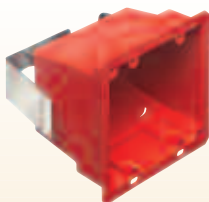
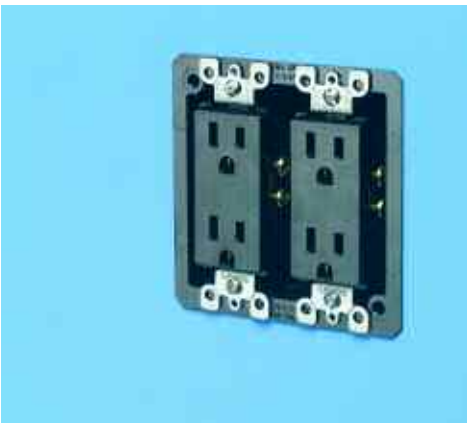
Arlington's new FSR404 boxes deliver installation convenience and versatility in retrofit projects!

Available in non-metallic (black and red plastic) and steel versions, they are ideal for installations of fire alarms or signaling devices. Use the non-metallic red or steel where required by local code.

Unique product feature

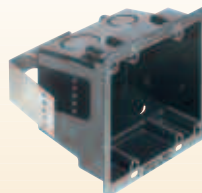
Screw hole patterns for 4x4 and 2-gang devices.

- 1/2" and 3/4" knockouts
- Spring clip holds box securely against wall when screws are tightened
- **Non-metallic versions** in RED or BLACK
- **Steel versions** are plated; also available in red
- Weight rating: 10 lbs. for ceilings; 6 lbs. for walls
- Fits wall thicknesses up to 1-1/4" – bracket can be field-modified for thicknesses greater than 1-1/4"



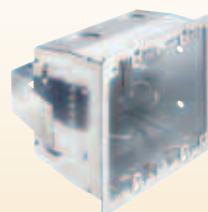
Plastic

FSR404RD
Plastic 4x4 Box
in Red



FSR404BL
Plastic 4x4 Box
in Black

Plated Steel



FSR404S
Plated steel
4x4 Box



**Steel version
also available
in Red**

FSR404SRD



CSA for
steel only

Arlington

1 Stauffer Industrial Park
Scranton, PA 18517

800/233.4717

Fax 570/562.0646

www.aifittings.com

www.arlnew.com/4x4

4x4 Boxes in Plastic and Plated Steel



For Power or Low Voltage Retrofit Projects

Typical Installation of Low Voltage Fire Alarm Box • using Plastic 4x4 Box



1 Determine the box location. Level. For plastic, cut a 4" x 3-3/4" hole (for steel a 4" x 3-7/8" hole). Pull cable(s) and push through the appropriate knockout (connector).



2 Tighten screw inside the box. This action pulls the spring clip firmly against the wall, holding the box securely in place.



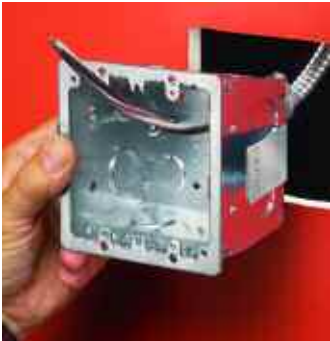
3 Install fire alarm (or other device) through the screw holes in the box.



4 Attach cover to complete installation.

Use steel box for retrofit projects where local code requires the use of metal raceway.

Typical Installation of Device • using Steel 4x4 Box



1 Determine the box location. Level. For steel, cut a 4" x 3-7/8" hole (a 4" x 3-3/4" hole for plastic). Pull cable(s) and push through the appropriate knockout (connector).



2 Tighten screw inside the box. This action pulls the spring clip firmly against the wall, holding the box securely in place.



3 Install devices through the screw holes in the box.



4 Attach wall plate to complete.

Use steel box for retrofit projects where local code requires the use of metal raceway.

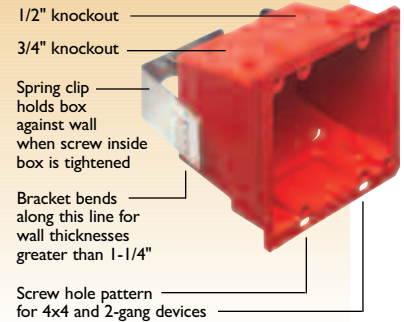
Catalog Number	UPC/DEI/NAED Mfg. #018997	Description 4 x 4 Box	Box Color	Unit/Std Pkg
FSR404RD	00598	Plastic	Red	25
FSR404BL	00596	Plastic	Black	25

Catalog Number	UPC/DEI/NAED Mfg. #018997	Description 4 x 4 Box	Box Color	Unit/Std Pkg
FSR404S	00597	Steel	Plated	25
FSR404SRD	00599	Steel	Red	25

Plastic box includes 4 x 4 box with spring clip, 3/4" and 1/2" NM cable connector. Steel version includes 4 x 4 box with spring clip.

Weight rating:
10 lbs for ceilings
6 lbs for walls

Product Features



1 Stauffer Industrial Park
Scranton, PA 18517
800/233.4717
Fax 570/562.0646
www.aifittings.com
www.arlnew.com/4x4

Patent pending
FSR404 0609/25M



Distributed by